

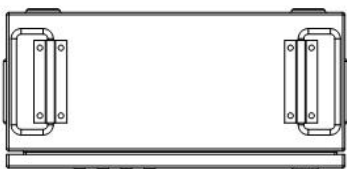
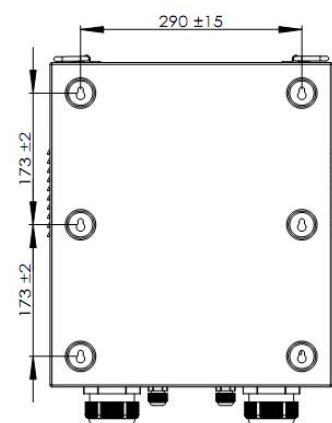
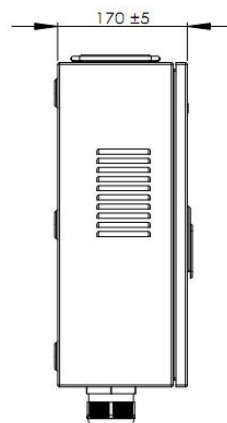
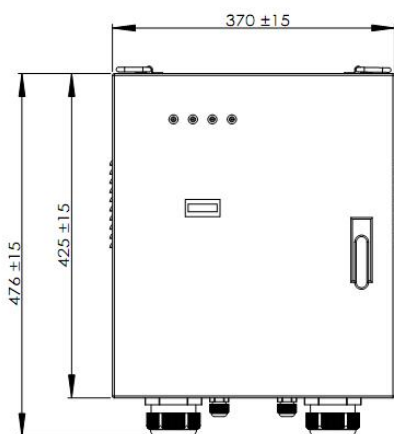
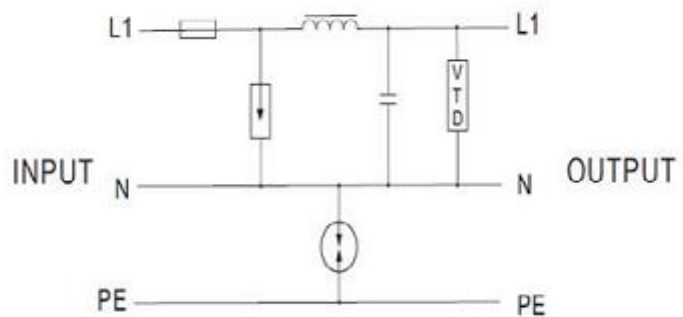
POWER SUPPLY

Single phase 63A~125A surge filter

■ Type 1+2 ■ 2-Port SPD ■ 63A filter ■ Iimp 25kA

BSF Series, BSF100-1/...-63A-PN-VTD-S

- Multi-stage protection circuit with LC Filter design to protect sensitive electronics.
- Provides extensive high frequency & RF filtering
- Prosurge ESG+VTD technology to improve voltage clamping performance
- Application for 120~127V, 220~277V (L-N) TT/TN, or single phase system with a grounded neutral
- Protection capability 25kA 10/350us or 100kA 8/20us per mode
- Surge capacity of N-PE mode up to 100kA 10/350 μs
- Load current rating 63A~125A available
- Built-in in series fuse for overload /short circuit protection available
- All mode protection, 1+1 protection circuit for TN-S and TT systems
- LED failure indication & remote alarm function available and surge counter optional
- Comply with UL1449 4th, IEEE C62.41, CSA C22.2, IEC/EN 61643-11



POWER SUPPLY

| | | | | |
|---|--------------------|---|---------------------------|----------|
| Model | | BSF100-1/180-63A-PN-VTD-S | BSF100-1/320-63A-PN-VTD-S | |
| According to | | IEC61643-11; UL1449-4th; IEC610006; ANSI/IEEE C62.41; AS1768-1991;AS3100 | | |
| Category IEC/EN/UL | | Class I+II/ Type 1+2 / Type 2 | | |
| Protection Mode | | All mode protection | | |
| Protection technology | | ESG(primary)+ VTD(Secondary) tech, GDT technology for NPE mode LC filter, Thermal disconnecter, Built-in over-current protection | | |
| Power system | Un | 120~127V single phase | 220-277V single phase | |
| Max. continuous operating voltage (AC/DC) | Uc | 180/230V | 320/420V | |
| Rated load Current | I _l | 63A | | |
| Nominal discharge current /In | In | 25kA(8/20us) | | |
| Primary surge protection rating | L-N | Iimp:25kA (10/350us), Imax:100kA (8/20us) | | |
| | N-PE | Iimp:100kA (10/350us), Imax:200kA(8/20us) | | |
| Secondary surge protection rating | L-N | I _{max} | 50kA(8/20us) | |
| Total surge capacity per Line | I _{total} | 150kA (8/20us) | | |
| Voltage protection level Up | L-N@6kV/3kA | VPR | <0.4kV | <0.5kV |
| | L-N@ In | Up | <0.7kV | < 0.85kV |
| | N-PE@1.2/50 | Up | < 1.0kV | < 1.5kV |
| Residual Current | I _{PE} | <0.1mA | | |
| Voltage drop: | | < 2V at 63 A load | | |
| Temporary overvoltage TOV —Withstand mode | U _{tov} | 230V/120min | 440VAC/120min | |
| Response time | T _a | ≤1ns | | |
| Filter attenuation | dB | >48dB @ 1MHz | | |
| Built in over load/ over-current protection in series | | 63A (optional) | | |
| Lightning counter Current | | ≤ 3kA | | |
| Protect Status Indication | | 2 LED display, Normal (Blue), Protection fault(Off) | | |
| Remote alarm | | Dry contact alarm relay – 250Vac/32Vdc, 5A | | |
| Connecting cable | | Power 6-8AWG(50A/63A), Alarm 14 -22AWG, | | |
| Environment | | Temperature Range: - 40°C ~ +70°C Humidity: ≤95% Altitude: ≤2000m | | |
| Mounting | | Wall mounting | | |
| Location Category | | Indoor | | |
| Degree of protection | | IP20 | | |
| Dimension | | 425mm (L) x370mm (W) x 170mm (H) approx | | |
| Weight | | 20kg approx | | |
| Approvals, Certification | | CE | | |

Other Models

| Power System | Load Current | Model Recommended | Recommended External Over Current Protection In Series | Built In Over Load/ Over-Current Protection in Series |
|-------------------|--------------|---------------------------|--|---|
| Single phase 2W+G | 125A | BSF100-1/...125A-PN-VTD-S | \ | 125A gL/gG |